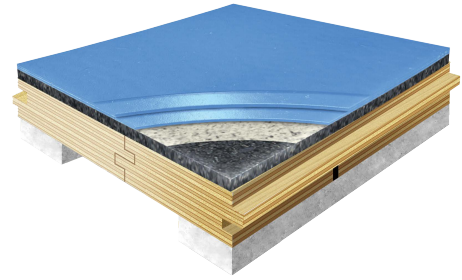


POLYTURF PLUS

4+2 Pad and Pour Lumaflex Elite

PolyTurf Plus Pad and Pour 4+2 with Lumaflex Elite is a gym floor incorporating a double tongue-and-groove layer of 18 mm plywood planks that provide stability and a uniform structure for resilient dance surfaces. They are made exclusively from birch, in conjunction with our Elite Continuous Cushion.



Warranty Protection

- 8-year comprehensive product coverage. Refer to sample warranty document for complete coverage details.

Environmental Facts and LEED

- For environmental facts and LEED credits, visit: tarkettsportsindoor.com/en/specs-and-data/environmental-fact-sheets and tarkettsportsindoor.com/en/specs-and-data/leed-information.

Maintenance Instructions

- For maintenance instructions, please refer to the PolyTurf Plus Pad and Pour maintenance guide at the following link: tarkettsportsindoor.com/en/specs-and-data/care-and-maintenance.

Foam Underlayment Options

- PolyTurf Plus Pad and Pour 4+2 with Lumaflex Elite uses Tarkett Sports' Elite Continuous Cushion that are 1/2" x 3" strips of foam, that act as a sleeper system. The system will achieve Class 5 regardless of the synthetic floor decided to use.

Sports Characteristics

Property	Standard	Value
Surface Finish Effect	ASTM F2772-11	Passed
Force Reduction	ASTM F2772-11	Class 5
Vertical Deformation	ASTM F2772-11	Passed
Ball Rebound	ASTM F2772-11	Passed

Surface Layer Technical Characteristics

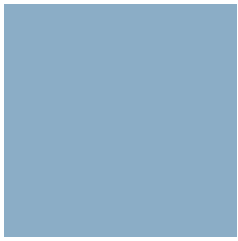
Property	Standard	Value
Reaction to Fire	ASTM E648	Class 1 (Radiant Panel)
Shore Hardness	—	80 (Shore A)
Tensile Strength	ASTM D412	1600 psi
Elongation	ASTM D412	150%
Tear Strength	ASTM D624	122 PLI
Thickness	—	6.0 mm (0.236")
Roll Width (Base Mat)	—	1.5 m (59")
Roll Length (Base Mat)	—	25 m (82')
Weight (Base Mat)	—	2.59 kg/m ² (0.53 lbs./sq. ft.)
Density (Base Mat)	ASTM D297	0.67 min g/cm ³
Tensile Strength (Base Mat)	ASTM D412	88 psi (die cast C)
Elongation (Base Mat)	ASTM D412	48.5% (die cast C)
Compression (Base Mat)	ASTM F36	87% (50 psi), 91% (100 psi), 91% (200 psi)
Flexibility (Base Mat)	ASTM F147	0-1
Compression Set B (Base Mat)	ASTM D395	37% (25% deflection, 158° F/22 hrs.)
Compression Set B (Base Mat)	ASTM D395	37% (25% deflection, 158° F/22 hrs.)

Compatible substrates include: properly constructed and prepared concrete, wood, asphalt, and cementitious underlayments. Refer to current installation guidelines, ASTM F710, ACI 302.2R, and other industry standard recommendations for more information. Tarkett Sports reserves the right to modify these specifications without affecting their compliance with standards. Some results may vary in relation to certain flexibilities found within specified testing procedures and manufacturing tolerances.

888.364.6541
tarkettsportsindoor.com



Available Colors for PolyTurf Plus Pad and Pour 4+2 with Lumaflex Elite



Sky Blue



Pool Blue



Blue Jay



Deep Blue



Coastal Blue



Teal Blue



Midnight Blue



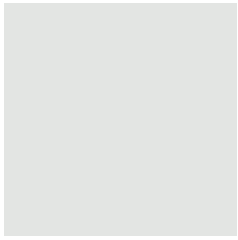
Aqua



Red



Red Rub



Grey Cloud



Grey Smoke



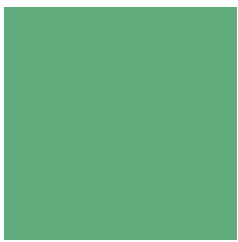
Storm Grey



Black



Orange



Tropical Green



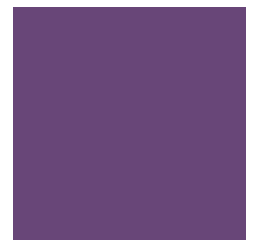
Garden Green



Forest Green



Violet



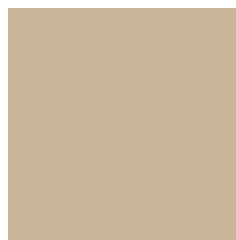
Purple



Sand



Tan



Smoothie



Desert



Gold

The colors presented here are representations only.

For information on obtaining individual color swatches, contact a local Tarkett Sports representative or call 888-364-6541.