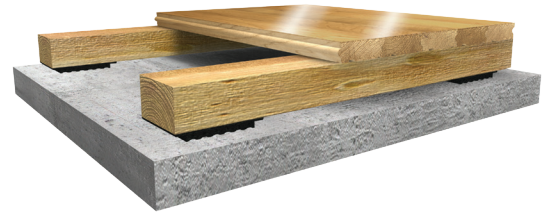


# CLUTHCOURT

Trainer 1

ClutchCourt Trainer 1 is a field-constructed hardwood sports floor with a floating sleeper system and 3/8" shock pads.



## Sports Characteristics

Property	Standard	Value
Force Reduction	ASTM F2772	Class 2
Ball Rebound	ASTM F2772	Passed

## Warranty Protection

- 10-year comprehensive coverage. Refer to sample warranty document for complete coverage details.

## Environmental Facts

- For environmental facts, visit: [tarkettsportsindoor.com/en/specs-and-data/environmental-fact-sheets](http://tarkettsportsindoor.com/en/specs-and-data/environmental-fact-sheets).

## Maintenance Instructions

- For a complete maintenance guide, visit: [tarkettsportsindoor.com/en/specs-and-data/care-and-maintenance](http://tarkettsportsindoor.com/en/specs-and-data/care-and-maintenance).

## Finishes

- Use only MFMA certified finishes. Water-based or oil-modified products are recommended.

## Technical Characteristics

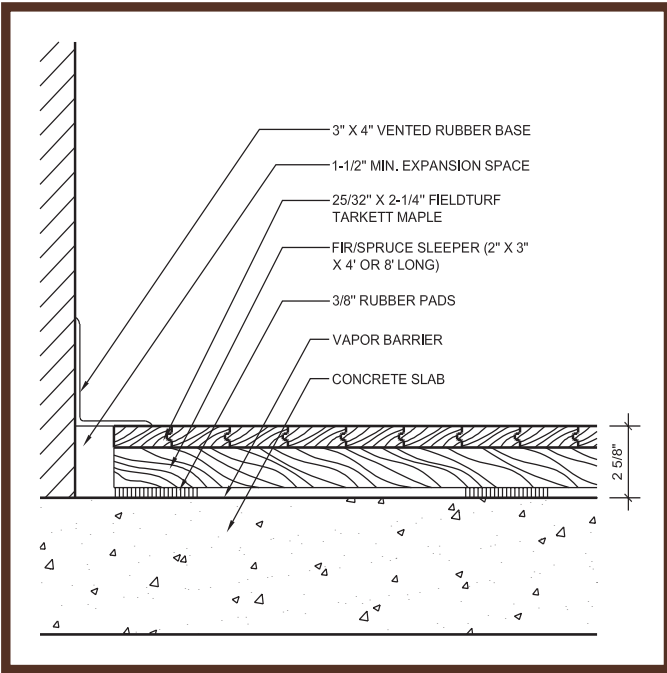
Property	Value
Maple Plank Length	Random
Maple Plank Width Options	2 1/4" (Standard), 1 1/2"
Maple Plank Thickness Options	25/32" (Standard), 33/32"
Maple Plank Grade Options	First Grade, Second and Better Grade, Third Grade
FSC Chain-of-Custody Certified	Yes (Available Upon Request)
Shock Pad Profile	3/8"
Shock Pad Placement	9" Spacing Along Sleeper
Sleeper Spacing	12" On Center
Total System Profile	2 5/8" (Modifiable)

Compatible substrates include: properly constructed and prepared concrete, wood, asphalt, and cementitious underlayments. Refer to current installation guidelines, ASTM F710, ACI 302.2R, and other industry standard recommendations for more information. Tarkett Sports reserves the right to modify these specifications without affecting their compliance with standards. Some results may vary in relation to certain flexibilities found within specified testing procedures and manufacturing tolerances.

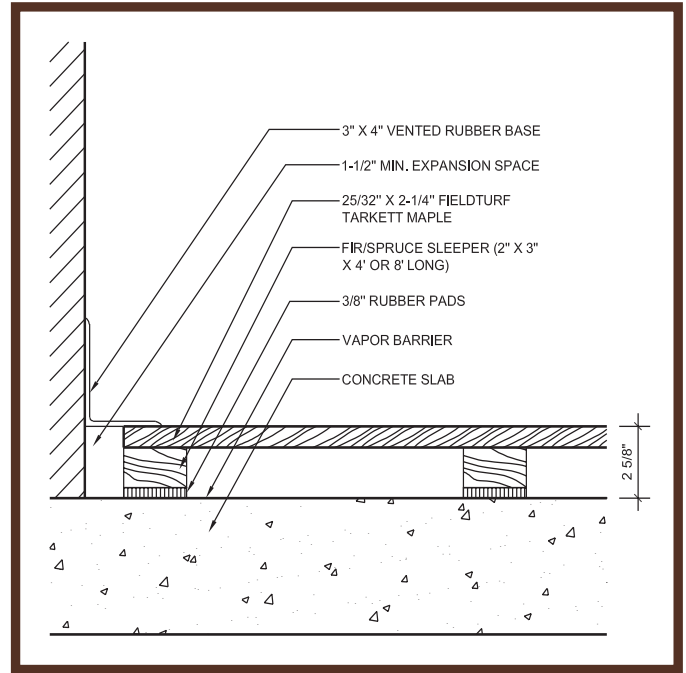
888.364.6541  
tarkettsportsindoor.com



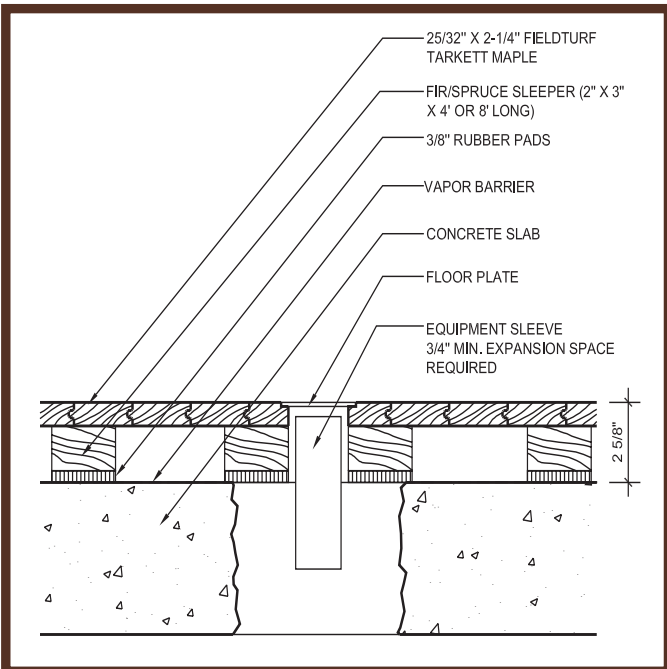
# Technical Details for ClutchCourt Trainer 1



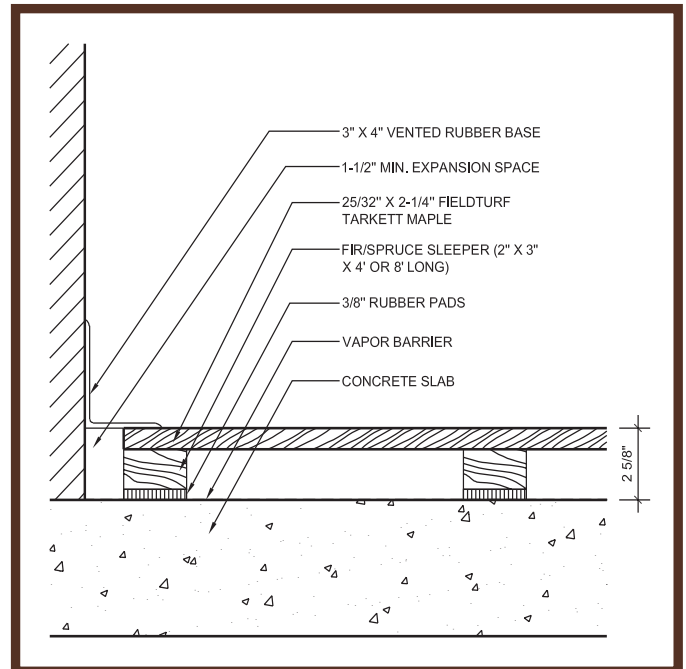
Wall Base Detail



Wall Base Detail



Insert Detail



Threshold Detail